

# Powering The Growth Journey of The Nation

**CPCB IV+** Range - 100 kVA - 200 kVA



**Best-in-class  
Fuel Efficiency**



**Small  
Footprint**



**Excellent Block  
Loading Capacity**



**Lowest Cost of  
Ownership**



**Widest Sales &  
Service Network**



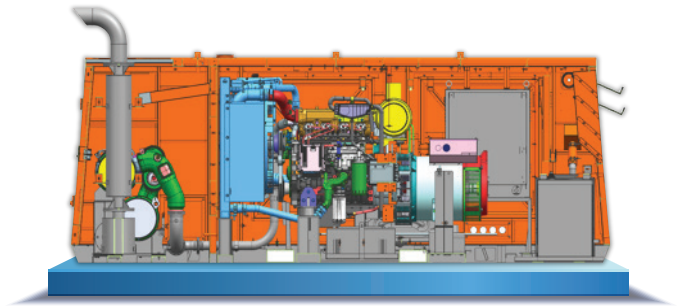
## Engine

- Lowest fuel consumption
- Dry type air cleaner with service indicator with lube oil & coolant
- Engine with Electrical Starter Motor
- Engine With battery charging alternator



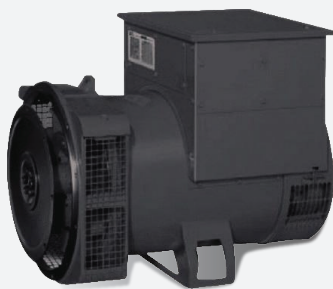
## Acoustic Enclosure

- Designed to meet stringent MoEF/ CPCB norms
- Designed to operate in extreme climatic conditions in temperatures ranging from -10°C to 55°C without any external aid
- Long lasting superlative fade resistant paint
- Draw out type fuel tank for easy maintenance
- Fire retardant acoustic and insulation material (PU Foam/Rockwool) for better safety
- Easy access for serviceable parts
- Pre - treatment process with UV resistant powder coating of all parts
- Engine and alternator are mounted on a common base frame with AVM pads



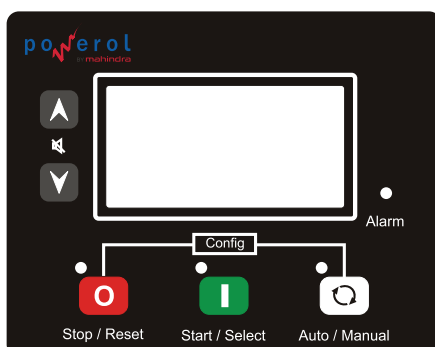
## Alternator

- Brushless screen protected, Drip proof, Self-excited, Self regulated IS/IEC60034-1
- A reliable long life with superior class 'H' insulation
- Ease of maintenance with integrated components and outboard Exciter/Rotating Rectifier
- Sealed bearing for lesser maintenance & longer life



## Controller (10 kVA - 320 kVA)

- The GC1114 with full graphic LCD display (back-lit with power save mode). It supports Auto (AMF, remote start/stop, cyclic) and Manual modes



- Measures voltage and frequency (1ph/3ph) for mains and genset
- Auto Exercise Mode (2 events) for pre-set start/stop
- Monitors engine safety parameters via analog resistive sensors and digital inputs
- Includes totalizers (starts, hours, kWh, kVAh), event log (100 entries with RTC), and parameter configuration via PC or control keys. Multi-level password protection prevents tampering

## Control Panel

Powder Coated Control Panel for weather-proof and long lasting finish. The control panel consists of the following parts:

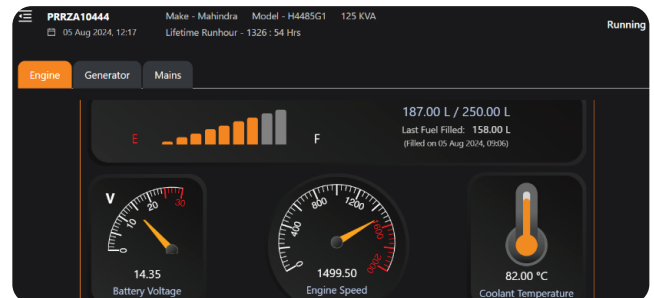
- Power Cable/Bus bars with suitable capacity with incoming/outgoing terminals.
- Indicator lamps for 'Load on' and 'Set Running'.
- Battery Charger 1 X 12 / 24 Volts DC
- Fuses/MCBs for control circuit safety protection
- MCCB of suitable rating with short circuit protections.

## Optional Accessories

- Cold Starting System
- PMG Alternator, Space heater, RTD/BTD
- Auto Manual Fail/Auto Transfer Switch/ Sync Panel. RMS from 10kVA Onwards

## Remote Monitoring System

- RMS is standard scope above 75 kVA IOT incorporated for continuous remote monitoring of engine operational parameters like running hours, health, RPM, logs of the error and operational parameters through app and web - based platforms
- Helps in monitoring of generator or entire fleet of generators from anywhere, any time ensuring good health and efficiency of the generator
- Can be available for other range also it required



## Smart Generator Management Solutions

- Receive timely notifications for maintenance checks (A Check/B Check), ensuring you never miss a critical service moment
- Tailor preventive maintenance schedules to the specific needs of your generators, enhancing their efficiency and reliability
- Automate maintenance tasks to stay ahead of potential issues, minimizing downtime and prolonging equipment lifespan
- Keep track of each fueling event to ensure accuracy and deter theft
- Examine fuel consumption patterns to pinpoint inefficiencies and improve fuel efficiency
- Boost operational transparency with our generator fuel traceability system, enabling precise fuel tracking and management

TECHNICAL SPECIFICATIONS

| Genset Rating (kVA)                                  | 100                | 125                | 160                |
|--|--------------------|--------------------|--------------------|
| DG Model   | M100DR             | M125DR             | M160DR             |
| Power Rating (kWe)                                   | 80                 | 100                | 128                |
| No. of Phases  | 3                  | 3                  | 3                  |
| Output Voltage (V)                                   | 415                | 415                | 415                |
| Power Factor (lagging)                               | 0.8                | 0.8                | 0.8                |
| Current (A) (1 Phase / 3 Phase)                      | 139                | 174                | 222                |
| Frequency (Hz)/ RPM                                  | 50/1500            | 50/1500            | 50/1500            |
| Governing Class                                      | G3                 | G3                 | G3                 |
| Starting System (volt)                               | 12                 | 12                 | 12                 |
| Fuel Tank Capacity (lit)                             | 250                | 250                | 388                |
| Genset Weight Dry                                    | 1970               | 2020               | 2500               |
| Genset Dimension (LxWxH) (mm)                        | 3700 X 1350 X 1550 | 3700 X 1350 X 1550 | 4200 X 1400 X 1745 |
| Controller Model                                     | GC 111X            | GC 1115            | GC 1115            |
| Engine Specifications                                |                    |                    |                    |
| Make   | Mahindra           | Mahindra           | Mahindra           |
| Model  | H4485G2            | H4485G1            | H6725G2            |
| Fuel system  | Electronic         | Electronic         | Electronic         |
| Rated Power Output (Hp)                              | 126                | 156                | 199                |
| Compression Ratio                                    | 17.2:1             | 17.2:1             | 17.2:1             |
| Aspiration   | TCIC               | TCIC               | TCIC               |
| No. of Cylinders                                     | 4                  | 4                  | 6                  |
| Bore x Stroke (mm)                                   | 105 X 137          | 105 X 137          | 105 x 137          |
| Displacement (Ltr)                                   | 4.7                | 4.7                | 7.2                |
| Lube Oil Specification                               | SAE 15W40 CI4+     | SAE 15W40 CI4+     | SAE 15W40 CI4+     |
| Total Lube Oil capacity (lit)                        | 13.5               | 13.5               | 20.2               |
| Lube Oil Change Period (hrs.)                        | 500Hrs             | 500Hrs             | 500Hrs             |
| System (Engine & radiator)<br>Coolant Capacity (lit) | 19                 | 19                 | 25                 |
| DEF Capacity (Lit)                                   | 35                 | 35                 | 35                 |
| Alternator Specifications                            |                    |                    |                    |
| Make   | CG/LS/Equivalent   | CG/LS/Equivalent   | CG/LS/Equivalent   |
| Enclosure Type                                       | IP23               | IP23               | IP23               |
| Voltage Regulation                                   | +/- 1%             | +/- 1%             | +/- 1%             |
| Class of Insulation                                  | H                  | H                  | H                  |
| Maximum Unbalanced<br>load across Phases             | 25%                | 25%                | 25%                |
| Total Harmonic distortion                            | AT NO LOAD <2.5%   | AT NO LOAD <2.5%   | AT NO LOAD <2.5%   |

All Specifications are at Standard NTP operating conditions  
• # Engine Power at 100 % load • \* Represents the Standby Ratings • Standard warranty of 2 Years/5000 Hours, 5 Years 5C warranty  
Disclaimer: Technical data and specifications are subject to change without notice.



# TECHNICAL SPECIFICATIONS

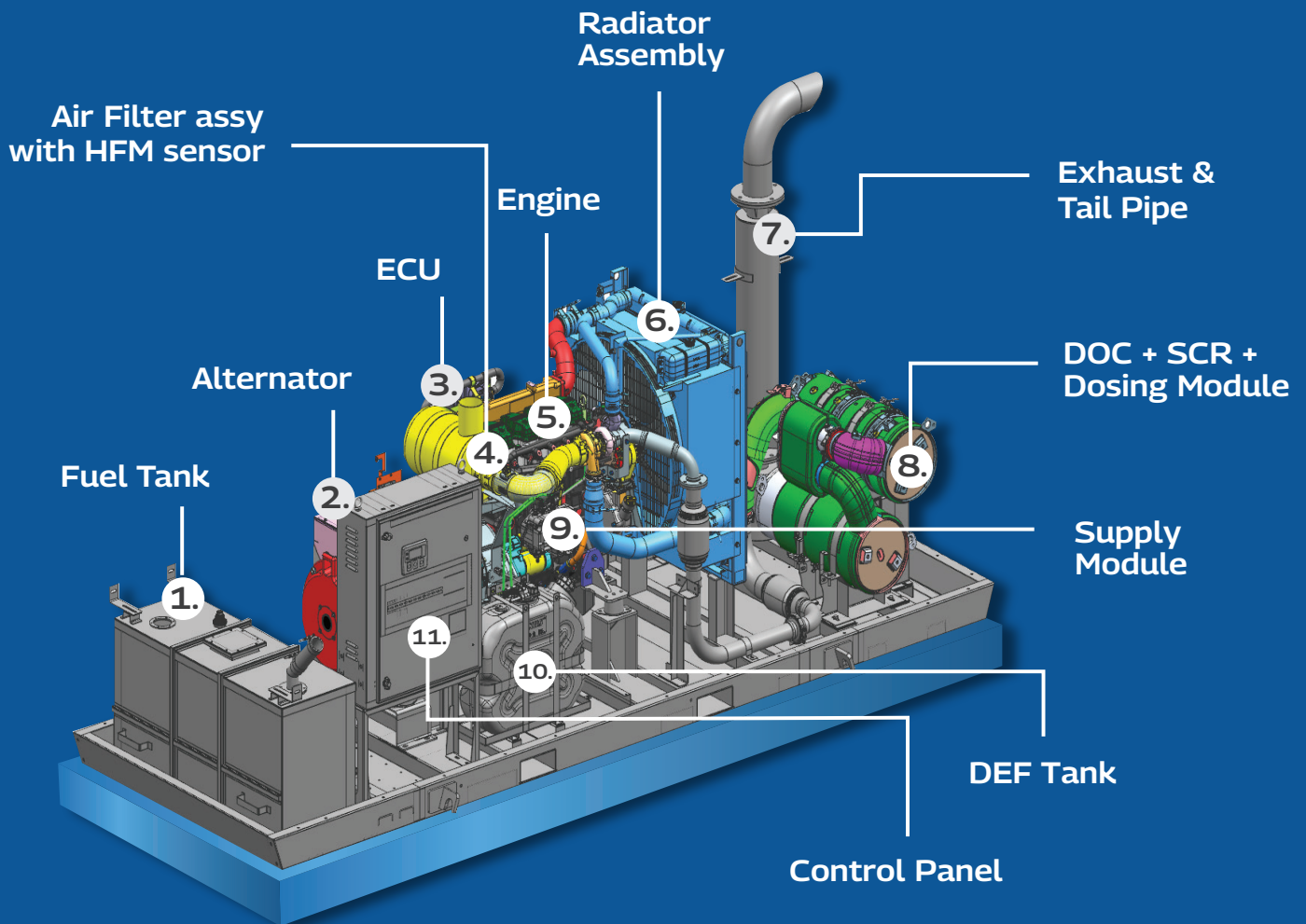
| Genset Rating (kVA)                                  | 180                | 200                |
|--|--------------------|--------------------|
| DG Model   | M180DR             | M200DR             |
| Power Rating (kWe)                                   | 144                | 160                |
| No. of Phases  | 3                  | 3                  |
| Output Voltage (V)                                   | 415                | 415                |
| Power Factor (lagging)                               | 0.8                | 0.8                |
| Current (A) (1 Phase / 3 Phase)                      | 250                | 278                |
| Frequency (Hz)/ RPM                                  | 50/1500            | 50/1500            |
| Governing Class                                      | G3                 | G3                 |
| Starting System (volt)                               | 12                 | 12                 |
| Fuel Tank Capacity (lit)                             | 388                | 388                |
| Genset Weight Dry                                    | 2700               | 2720               |
| Genset Dimension (LxWxH) (mm)                        | 4200 X 1400 X 1745 | 4200 X 1400 X 1745 |
| Controller Model                                     | GC 1115            | GC 1115            |
| Engine Specifications                                |                    |                    |
| Make   | Mahindra           | Mahindra           |
| Model  | H6725G3            | H6725G4            |
| Fuel system  | Electronic         | Electronic         |
| Rated Power Output (Hp)                              | 223                | 247                |
| Compression Ratio                                    | 17.2:1             | 17.2:1             |
| Aspiration   | TCIC               | TCIC               |
| No. of Cylinders                                     | 6                  | 6                  |
| Bore x Stroke (mm)                                   | 105 x 137          | 105 X 137          |
| Displacement (Ltr)                                   | 7.2                | 7.2                |
| Lube Oil Specification                               | SAE 15W40 CI4+     | SAE 15W40 CI4+     |
| Total Lube Oil capacity (lit)                        | 20.2               | 20.2               |
| Lube Oil Change Period (hrs.)                        | 500Hrs             | 500Hrs             |
| System (Engine & radiator)<br>Coolant Capacity (lit) | 24                 | 24                 |
| DEF Capacity (Lit)                                   | 35                 | 35                 |
| Alternator Specifications                            |                    |                    |
| Make   | CG/LS/Equivalent   | CG/LS/Equivalent   |
| Enclosure Type                                       | IP23               | IP23               |
| Voltage Regulation                                   | +/- 1%             | +/- 1%             |
| Class of Insulation                                  | H                  | H                  |
| Maximum Unbalanced<br>load across Phases             | 25%                | 25%                |
| Total Harmonic distortion                            | AT NO LOAD <2.5%   | AT NO LOAD <2.5%   |

All Specifications are at Standard NTP operating conditions

• # Engine Power at 100 % load • \* Represents the Standby Ratings • Standard warranty of 2 Years/5000 Hours, 5 Years 5C warranty

Disclaimer: Technical data and specifications are subject to change without notice.

## Key Components



## Applications



**Mahindra & Mahindra Ltd.,**  
Mahindra Powerol  
MHEL, 1st Floor, Gate No. 12, A-1/1,  
Talawade Chakan Rd, Chakan Industrial Area,  
Phase-IV, Nigoje, Maharashtra, 410501.

Dealer Stamp

