

# 180+ Dealer Network



The Efficient Heart of  
your Business,  
now BSIV & BSV Ready



For engine enquiries please contact:  
Swami Ballal  
Mob no: 9130003174/9022101754 | email: 25004955@mahindra.com

Local Contact



Mahindra & Mahindra Ltd.  
Powerol Business, Powerol Building,  
Gate No. 2, Akurli Road, Kandivali (E),  
Mumbai - 400 101, India.



Emission Compliant



Excellent Fuel Efficiency



Lower operating & Maintenance cost



Tough & Reliable



Nationwide Service Network



Cold Start ability

Toll free no.  
1800 419 1999

customercare.engine@mahindra.com

mahindrapowerol.com



## Ten business sectors. One philosophy - Rise.



AEROSPACE & DEFENCE



AFTERMARKET



AUTOMOTIVE



FARM EQUIPMENT



FINANCIAL SERVICES



HOSPITALITY



TWO WHEELERS



ENERGY



REAL ESTATE



INFORMATION TECHNOLOGY

## Many Companies. One Mahindra.

Mahindra, a multi billion group, has presence in more than 100 countries and employs over 200,000 people. It operates across 20 key industries that form the foundation of every modern economy.

From assembling the iconic jeep that conquered independent India's toughest terrain, Mahindra today focuses on innovation and technology to fuel the nation forward. Mahindra makes great automobiles, and offer a portfolio of products and a suite of services that unleash new modes of thinking, bringing to life un-imagined possibilities. Mahindra does it all so that you - and the world around you - can continue to Rise.

## About Powerol

In 2001, Mahindra and Mahindra entered into the field of power generation through its engines under the brand name Mahindra Powerol that are propelling Diesel Generating Sets from rating 5kVA to 625kVA. Mahindra Powerol, known for its fuel efficiency and quick customer response is trusted by telecom & retail customers. Mahindra engines are powering applications across industries.

Within short span of time, Mahindra Powerol has garnered immense customer trust which shows its level of commitment and customer centric approach. Presently, its more than 325,000 gensets are powering different industries and applications in India and overseas market. Mahindra Powerol through its technology & service has taken deep stride in the engine and DG set industry. In a little over a decade, it has also expanded its footprint in South East Asia, Middle East and Africa.

## Awards & Recognition



Super Brand Award



Japan's Deming Prize for TQM



The Economics Times Best Brands Award

## Mahindra Research Valley, Chennai

- Dedicated State-of-the-art Design & Engineering facility
- In-house capabilities for developing & designing engines
- Modern equipments & software for design development and upgradation of engines, systems and control
- Test cells for R&D testing



## World Class Manufacturing

Mahindra engines are manufactured at the state-of-the-art manufacturing facilities located in Pune & Nagpur. The manufacturing facility is equipped with:

- Fully automated, controlled environment engine assembly
- ISO 9001 TUV and QS 14000 certified & winner of Deming & JQM Application Award
- Quality control systems to maintain highest level of engine quality standards

## About Industrial Engines

Mahindra Powerol is one of the leading diesel engine manufacturers in India. These engines are used in various industrial applications. With the capability to meet stringent emission norms, excellent fuel efficiency & reliability, Mahindra Powerol has become preferred choice for OEMs' and end users.

These made-in-India engines are specifically designed to suit the application requirement and bring unique features with them to give competitive advantage to equipment.

Major design features :

- Compact design, low NVH levels suitable for running industrial applications.
- Mahindra's prolonged experience in diesel engine technology.
- Emission compliant CEV BIV / BSV ready.
- Low operating & maintenance cost.
- Robust design for optimal functioning under the most extreme conditions. Can absorb sudden loading and shocks without affecting performance.
- High back-up torque at lower rpm levels.
- Fuel efficient.
- Cold start ability basis requirement.



Above features complemented with service network spread across country prove to be the winning combination in the market. During the past years, the Mahindra team in collaboration with various esteemed OEMs has been able to provide the country the most efficient and robust industrial solutions.



Presently, Mahindra Powerol caters to industrial engine needs of following segments:

- Construction
- Fire Fighting Pumps

### Construction, Concreting & Material handling equipment

Mahindra Powerol engines are built to withstand long working hours, in the most demanding conditions, from deserts and high altitude locations to sub-zero temperature zones. This makes them ideal for the construction and mining industry. Mahindra Powerol engines are proven to run construction applications like backhoe loaders, forklift trucks, compactors, self-loading concrete mixers, pick & carry cranes, next-gen cranes, concrete pumps, compressors, safe truck mounted cranes, transit mixers, pavers & many more.



### Fire Fighting Pump

Mahindra in India has been closely associated with pump industry for the past decade and offers customized value packages for a variety of fire fighting pump application ranging from 16Hp to 260hp. In association with major partners like Wilo M&P, Flowmore, CRI Pumps, Lubi Pumps etc Mahindra has established itself as preferred prime mover in the segment.

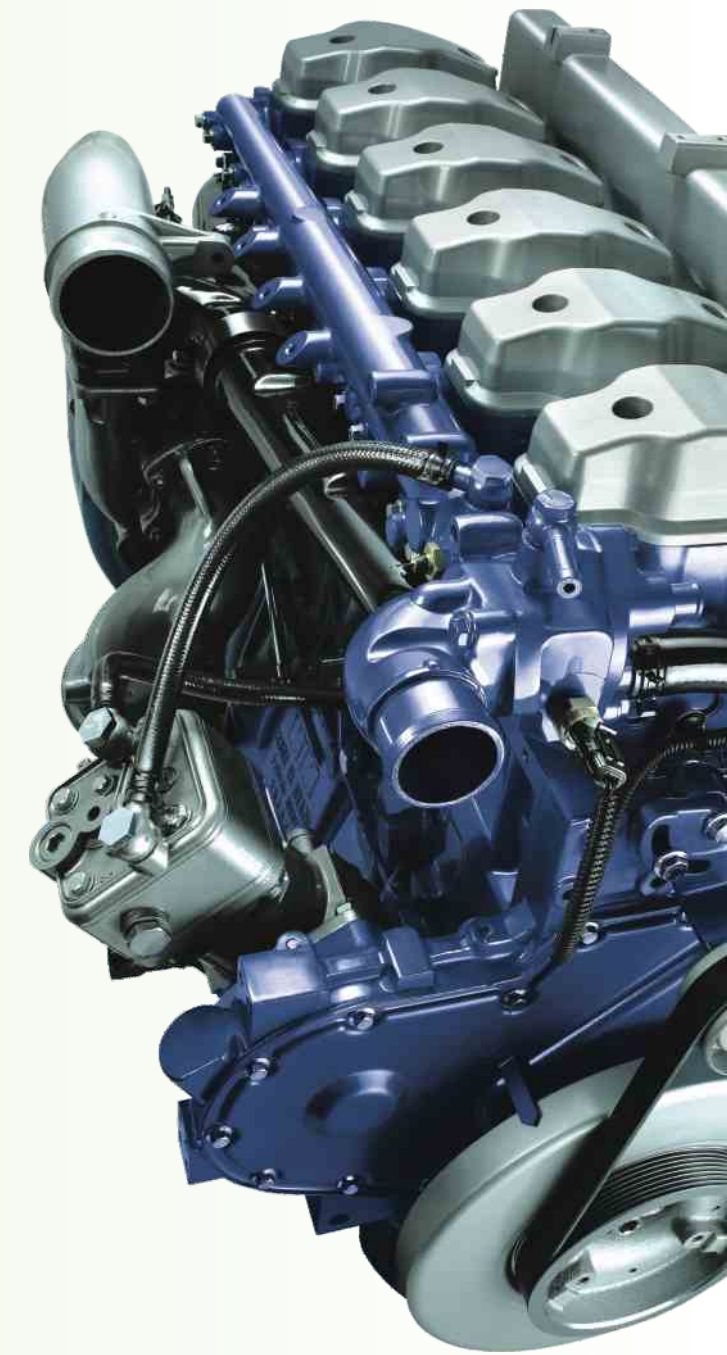


# Next Generation Engines designed for CEV BSIV/ BSV Green Era

ENGINE MODEL	EMISSION STANDARD	MAX. POWER		BORE X STROKE (mm)	NO. OF CYLINDERS	DISPLACEMENT (LITERS)	ASPIRATION (TC/NA/TCI)	AFTER TREATMENT
		HP	RPM					
VNEF74	CEV BSIV/BSV Ready	74	2200	96 X 122	4	3.53	TCI	DOC
VNEF95	CEV BSIV/BSV Ready	95	2200	96 X 122	4	3.53	TCI	SCR + DOC
VNEF100	CEV BSIV/BSV Ready	100	2200	96 X 122	4	3.53	TCI	SCR + DOC
VNEF110	CEV BSIV/BSV Ready	110	2200	96 X 122	4	3.53	TCI	SCR + DOC
mPower 7.2	CEV BSIV/BSV Ready	170	2200	105 X 137	6	7.2	TCI	SCR + DOC
mPower 7.2	CEV BSIV/BSV Ready	230	2200	105 X 137	6	7.2	TCI	SCR + DOC
mPower 7.2	CEV BSIV/BSV Ready	265	2200	105 X 137	6	7.2	TCI	SCR + DOC

## CEV BSIII Engines for Construction Equipments, Material Handling Equipments and Compressors

ENGINE MODEL	EMISSION STANDARD	MAX. POWER		BORE X STROKE (mm)	NO. OF CYLINDERS	DISPLACEMENT (LITERS)	ASPIRATION (TC/NA/TCI)
		HP	RPM				
255 DILS	BSIII CEV/ Unregulated	23.5	2400	88.9 X 110	2	1366	NA
275 TU	BSIII CEV/ Unregulated	39	2600	88.9 X 101.6	3	1892	NA
575 DI	BSIII CEV/ Unregulated	44.5	2300	88.9 X 101.6	4	2523	NA
575 ELS	BSIII CEV/ Unregulated	47.5	2100	88.9 X 120	4	2979	NA
555 DI	BSIII CEV/ Unregulated	49.25	2100	94 X 110	4	3052	NA
VNEF49	BSIII CEV/ Unregulated	49	2100	96 x 122 (mm)	4	3532	NA
585 DI	Unregulated	50	2600	88.9 X 101.6	4	2523	NA
605DI	BSIII CEV/ Unregulated	57	2100	96 X 122	4	3532	NA
705 DI	Unregulated	65	2200	96 X 122	4	3532	NA
805 DI	Unregulated	76	2300	94 X 115	4	3192	TC
4805IA	BSIII CEV/ Unregulated	80	2300	96 X 122	4	3532	TCI
110 HP	Unregulated	110	2300	96 X 122	4	3532	TCI
mPower 4.8	Unregulated	135-170 HP	2200	105 X 137	4	4.8 Ltr	TA
mPower 7.2	Unregulated	170-260 HP	2200	105 X 137	6	7.2 Ltr	TCA
mPower 9.3	Unregulated	325-400 HP	2200	116.5 X 146.1	6	9.3 Ltr	TCA



## MAHINDRA POWEROL ENGINES POWERING VARIOUS APPLICATIONS





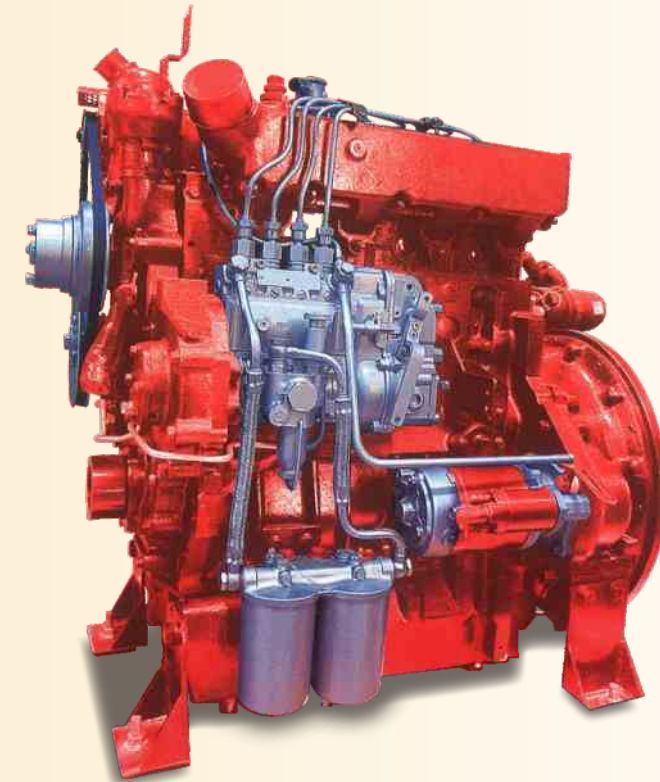
# Mahindra engines for Fire fighting Pump applications

Model	HP	RPM
2205	18	1500
3335	30	1500
	30	1800
3285	34	1500
3445	40	1500
4485	40	1800
	44	1800
555DI	50	2100
4575	52	1500
4645	43	1800
	53	2000
	57	2150
	58	1800
705DI	58	2300
	65	2200
4725	63	1800
	65	1500
	65	1800
	70	2000
805DI	72	2150
41105	72	2000
	74	2150
	77	2300
	75	2200
	92	1800
	100	2000
	107	2200
	110	2200
	110	2300
4905	79	1500
	82	1800
	82	1500
	85	1800
41035	92	1500
	94	1500
	102	1800
4805	80	2300
41125	102	1500
mPower4.8	125	1500
	128	1500
	130	2200

Model	HP	RPM
mPower7.2	156	1500
	172	1500
	198	1800
	199	1500
	230	1800
	230	2100
	254	1500
	254	1800
	260	2100

## Engine exclusively designed for Firefighting pumps with:

- Compact designs for portable solutions
- Proven technology running in various private and public institutions
- Optimized cooling system, safeties, industrial silencer, suitable filters and necessary peripherals
- Capability to handle sudden load fluctuations without affecting performance
- Robust design to withstand extreme climatic conditions
- Relevant consultant approvals for sale in Firefighting segment



24 X 7 CALL CENTRE SUPPORT



RELIABLE & ROBUST



COMPACT ENGINES



FUEL EFFICIENT ENGINES



140 + SERVICE TOUCH POINTS



ENGINE AVAILABLE IN STOCK



Power Plants



Oil & Gas

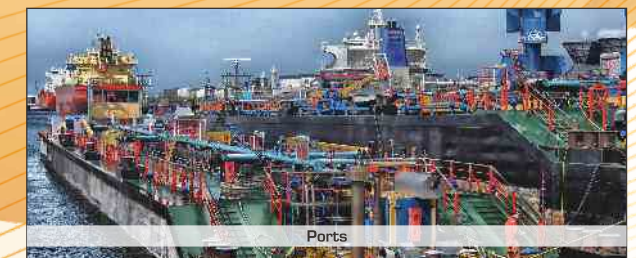


Commercial Complex

Powering Fire fighting Systems across industries



Residential



Ports

Wide range of engines from 34 HP to 260 HP

OEM associations of firefighting pumps:

